

EP0500ML13

Features:

- 5.0-inch capacitive touch screen
- Interface: I2C
- The capacitive touch panel can be flexibly customized with features such as water rejection, glove support, etc.
- The cover lens can be customized with thickness, printing, coating and etc.

[Print](#)

???

Overall(General Specification)

Part number	EP0500ML13
Size	5.0 inch
Resolution	Not available
Outline Dimensions(mm)	118.5 x 77.55 x 1.7
Active Area (A.A.) (mm)	110 x 66.8
Panel Type	G/G
Viewing Angle(L/R/U/D)	Not available
Brightness	Not available
LED lifetime(hrs)	Not available
Interface	I2C
Power	
VCOM	Not available
LED Driver	Not available
Environment	
Operating Temperature	-30 to 80

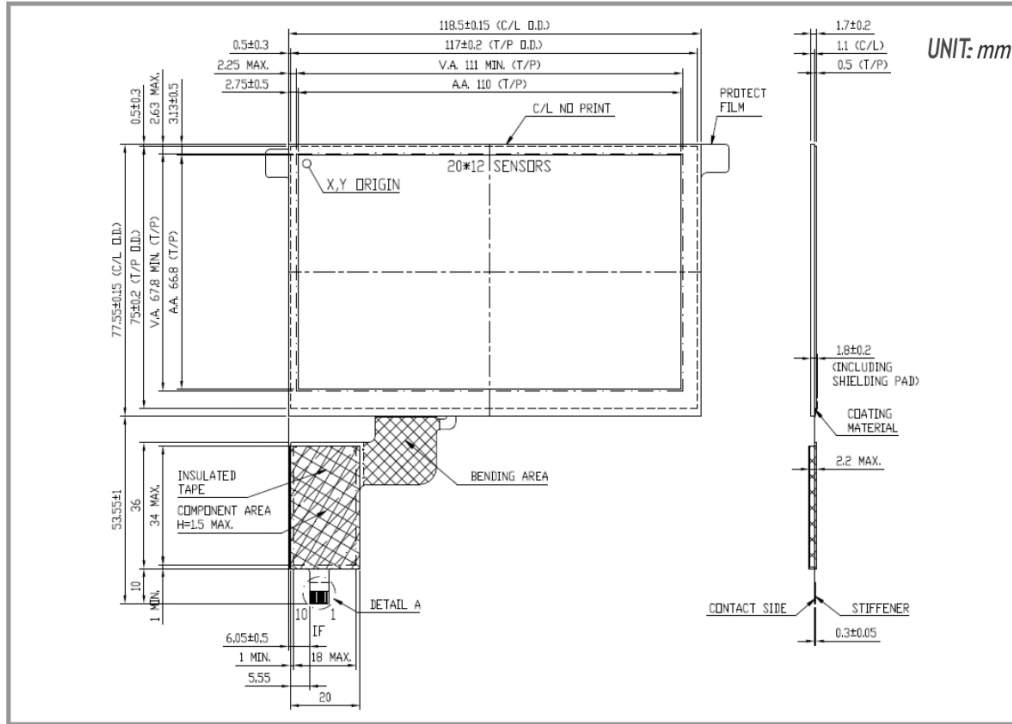
???

Storage Temperature

-30 to 80

EP0500ML13 | 20 x 12 Sensors

DIMENSIONS



UNIT: mm

Not to scale

www.edtc.com

Emerging Display Technologies Corp.

Copyright 2019