



ET024013DMA

Features:

- 2.4-inch 240*320 resolution IPS TFT display module
- 262K colors
- Brightness: 550 nits
- LCM Interface: MPU-8/16/18 bit
- Super Wide View: 80/80/80/80(L/R/U/D)

[Print](#)

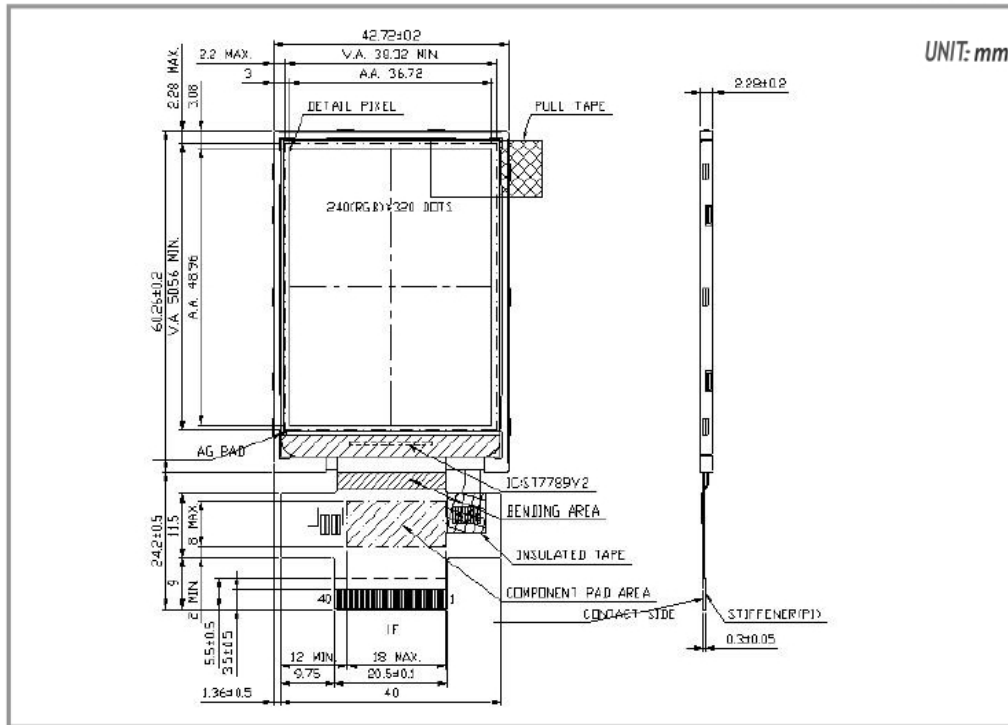
???

Overall(General Specification)

Part number	ET024013DMA
Size	2.4 inch
Resolution	240RGB x 320
Outline Dimensions	42.72 x 60.26 x 2.28 mm
Active Area (A.A.)	36.72 x 48.96 mm
LCD Type	IPS-TFT LCD, Transmissive, Normally Black
Viewing Angle(L/R/U/D)	Super Wide View, 80/80/80/80
Brightness	550 nits
LED lifetime	30K hrs
Interface	MPU-8/16/18 bit
Power	
VCOM	Yes
LED Driver	No
Environment	
Operating Temperature	-20 to 70 °C
Storage Temperature	-30 to 80 °C

ET024013DMA | 240(RGB) x 320

DIMENSIONS



www.edtc.com

Not to scale
Emerging Display Technologies Corp.
Copyright 2019