

ETML043013DDRA

Features:

- 4.3-inch 480*272 resolution IPS TFT display module
- 16.7M colors
- Brightness: 850 nits with capacitive touch screen
- LCM Interface: RGB 24 bit Parallel (SYNC/DE/SYNC-DE Mode)
- Capacitive touch Interface: I2C
- Super Wide View: 85/85/85/85(L/R/U/D)
- The capacitive touch panel can be flexibly customized with features such as water rejection, glove support, etc.
- The cover lens can be customized with thickness, printing, coating and etc.

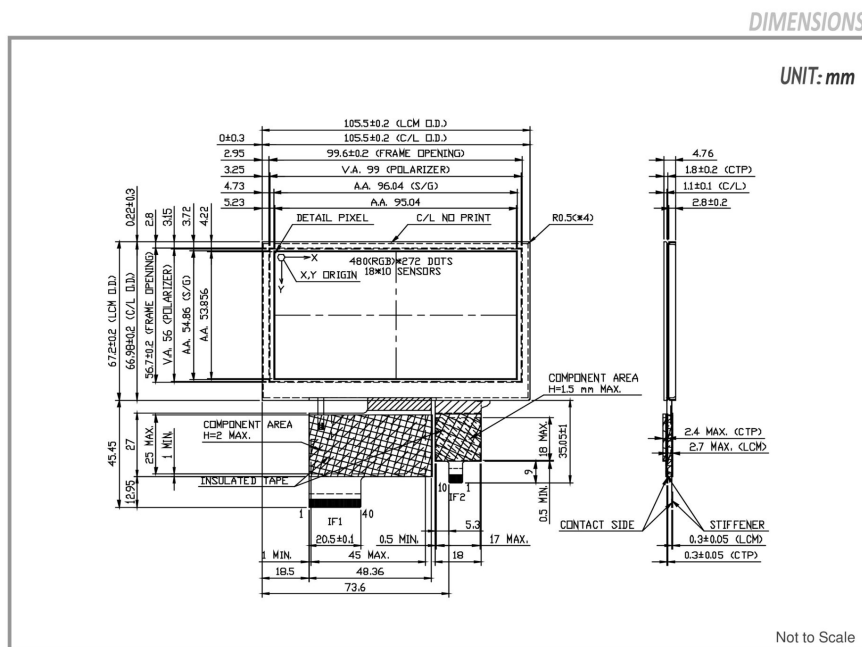
[Print](#)

Overall(General Specification)

Part number	ETML043013DDRA
Size	4.3 inch
Resolution	480RGB x 272
Outline Dimensions	105.5(W) x 67.2 (H) x 4.76(D) mm
Active Area (A.A.)	95.04(W) x 53.856(H) mm
LCD Type	IPS-TFT LCD, Transmissive, Normally Black
Touch Screen	Capacitive Touch
Viewing Angle(L/R/U/D)	Super Wide View, 85/85/85/85
Brightness	850 nits
LED lifetime	30K hrs

Interface	LCM: RGB 24 bit Parallel (SYNC/DE/SYNC-DE Mode)
	Capacitive Touch: I2C
Power	
VCOM	Yes
LED Driver	Yes
Environment	
Operating Temperature	-20 to 70 °C
Storage Temperature	-30 to 80 °C

ETML043013DDRA | 480(RGB) x 272



www.edtc.com

Emerging Display Technologies Corp.
Copyright 2007