



## ETML121013DBDRA

### Features:

- 12.1-inch 1280\*800 resolution IPS TFT display module
- 16.7M colors
- Brightness: 850 nits with capacitive touch screen
- LCM Interface: LVDS 8 bit
- Capacitive touch Interface: USB
- Super Wide View: 85/85/85/85(L/R/U/D)
- The capacitive touch panel can be flexibly customized with features such as water rejection, glove support, etc.
- The cover lens can be customized with thickness, printing, coating and etc.

[Print](#)

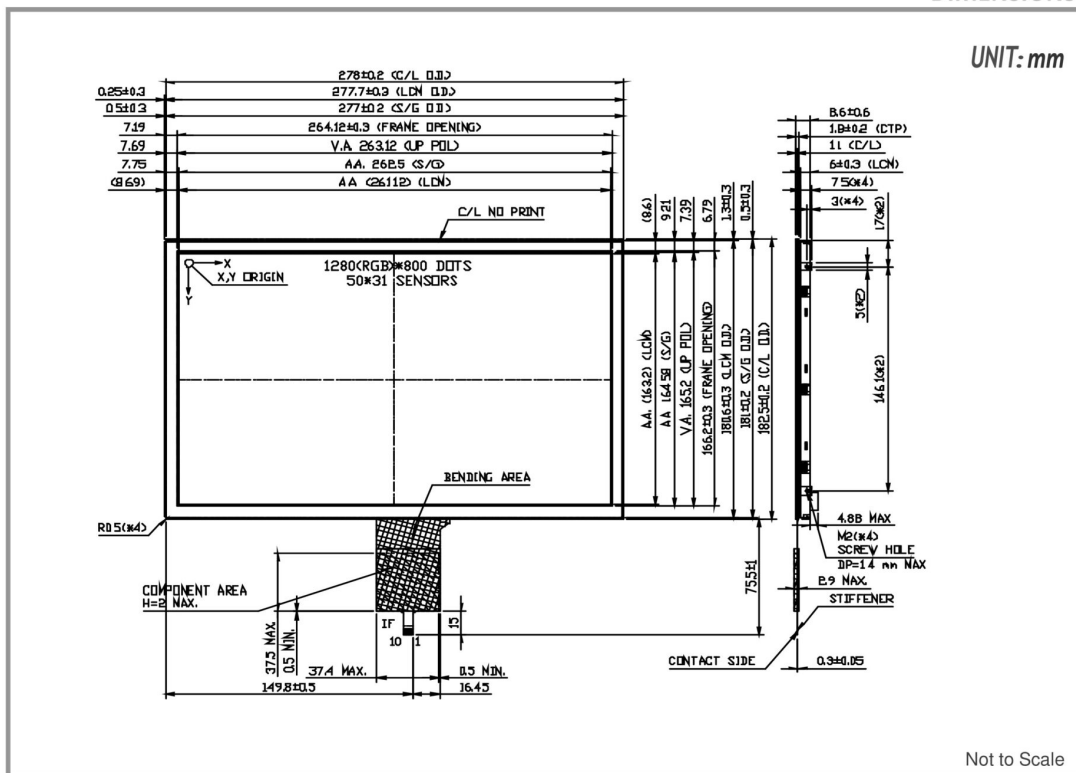
### Overall(General Specification)

Part number	ETML121013DBDRA
Size	12.1 inch
Resolution	1280RGB x 800
Outline Dimensions	278(W) x 182.5(H) x 8.6(D) mm
Active Area (A.A.)	261.12(W) x 163.2(H) mm
LCD Type	IPS-TFT LCD, Transmissive, Normally Black
Touch Screen	Capacitive Touch
Viewing Angle(L/R/U/D)	Super Wide View, 85/85/85/85
Brightness	850 nits
LED lifetime	30K hrs
Interface	LCM: LVDS 8 bit Capacitive Touch: USB

Power	
VCOM	Yes
LED Driver	Yes
Environment	
Operating Temperature	-20 to 70 °C
Storage Temperature	-30 to 80 °C

ETML121013DBDRA | 1280(RGB) x 800

DIMENSIONS



www.edtc.com

Emerging Display Technologies Corp.  
Copyright 2007