



ETML035023UDRA

Features:

- 3.5-inch 320*240 resolution IPS TFT display module
- Complete product family (3.5" ~ 7") is mechanically exchangeable with unified industrial interface
- 16.7M colors
- Brightness: 850 nits with capacitive touch screen
- LCM Interface: RGB 24 bit Parallel (DE/SYNC Mode)
- Capacitive touch Interface: I2C
- Super Wide View: 80/80/80/80(L/R/U/D)
- The capacitive touch panel can be flexibly customized with features such as water rejection, glove support, etc.
- The cover lens can be customized with thickness, printing, coating and etc.

???

Overall(General Specification)

Part number	ETML035023UDRA
Size	3.5 inch
Resolution	320RGB x 240
Outline Dimensions	94.52 x 77 x 7.26 mm
Active Area (A.A.)	70.08 x 52.56 mm
Panel Type	IPS-TFT LCD, Transmissive, Normally Black With Capacitive Touch

[Print](#)

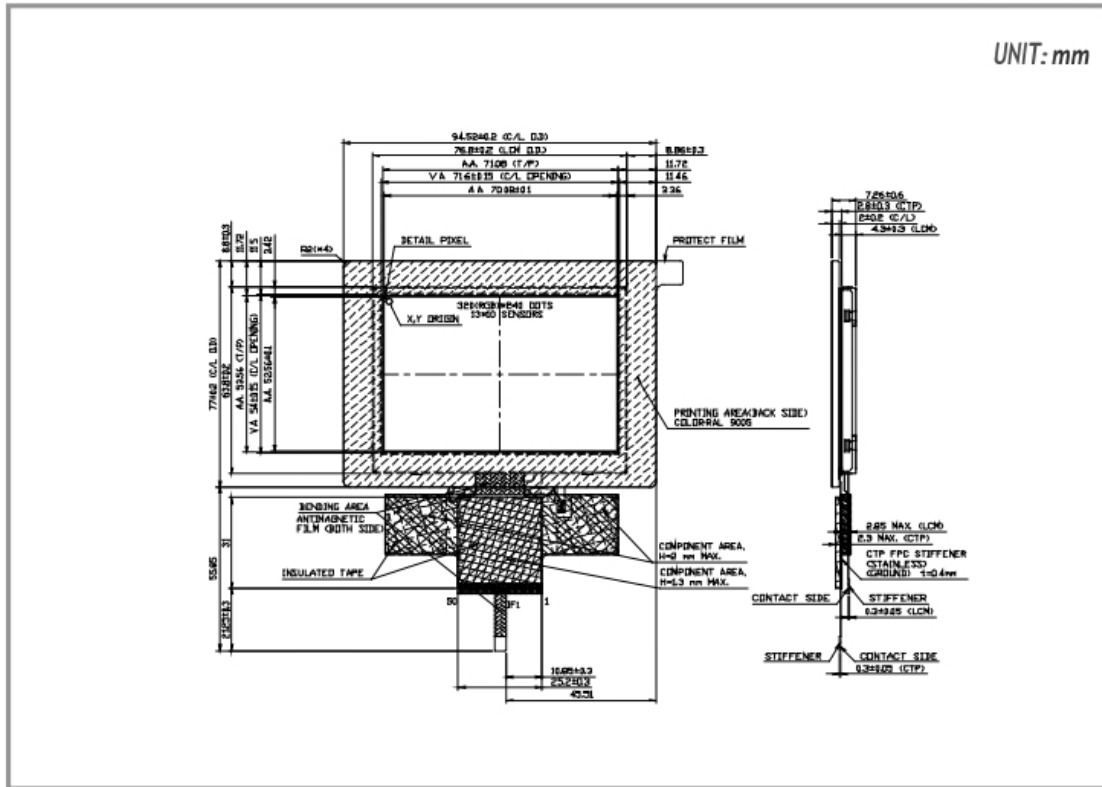
???

Viewing Angle(L/R/U/D)	Super Wide View, 80/80/80/80
Brightness	850 nits
LED lifetime(hrs)	50K
Interface	LCM: RGB 24 bit Parallel (DE/SYNC Mode) Capacitive Touch: I2C
Power	
VCOM	Yes
LED Driver	Yes
Environment	
Operating Temperature	-30 to 85 °C
Storage Temperature	-30 to 85 °C

ETML035023UDRA | 320(RGB) x 240

DIMENSIONS

UNIT: mm



Not to scale

www.edtc.com

Emerging Display Technologies Corp.

Copyright 2007