

## ETML057023UDRA

### Features:

- 5.7-inch 640\*480 resolution IPS TFT display module
- Complete product family (3.5" ~ 7") is mechanically exchangeable with unified industrial interface
- 16.7M colors
- Brightness: 850 nits with capacitive touch screen
- LCM Interface: RGB 24 bit Parallel DE Mode Default, SYNC-Mode Enable Via SPI-Register
- Capacitive touch Interface: I2C
- Super Wide View: 85/85/85/85(L/R/U/D)
- The capacitive touch panel can be flexibly customized with features such as water rejection, glove support, etc.
- The cover lens can be customized with thickness, printing, coating and etc.

???

### Overall(General Specification)

Part number	ETML057023UDRA
Size	5.7 inch
Resolution	640RGB x 480
Outline Dimensions	147.6 x 118.8 x 8.56 mm
Active Area (A.A.)	115.2 x 86.4 mm

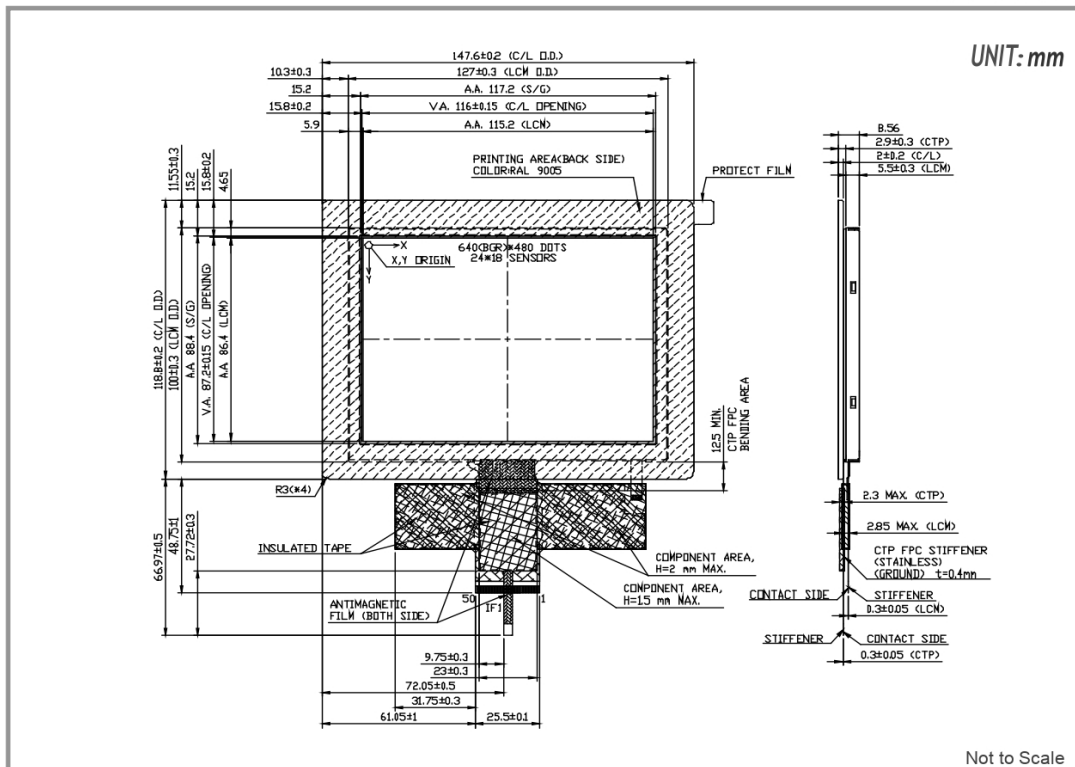
[Print](#)

???

Panel Type	IPS-TFT LCD, Transmissive, Normally Black, Anti-Glare With Capacitive Touch
Viewing Angle(L/R/U/D)	Super Wide View, 85/85/85/85
Brightness	850 nits
LED lifetime(hrs)	50K
Interface	LCM: RGB 24 bit Parallel DE Mode Default, SYNC-Mode Enable Via SPI- Register Capacitive Touch: I2C
Power	
VCOM	Yes
LED Driver	Yes
Environment	
Operating Temperature	-30 to 85 °C
Storage Temperature	-30 to 85 °C

ETML057023UDRA | 640(RGB) x 480

DIMENSIONS



www.edtc.com

Emerging Display Technologies Corp.  
Copyright 2007

