



ETML070023UDRA

Features:

- 7-inch 800*480 resolution IPS TFT display module
- Complete product family (3.5" ~ 7") is mechanically exchangeable with unified industrial interface
- 16.7M colors
- Brightness: 850 nits with capacitive touch screen
- LCM Interface: RGB 24 bit Parallel DE Mode Default, SYNC-Mode Enable Via SPI-Register
- Capacitive touch Interface: I2C
- Super Wide View: 80/80/80/80(L/R/U/D)
- The capacitive touch panel can be flexibly customized with features such as water rejection, glove support, etc.
- The cover lens can be customized with thickness, printing, coating and etc.

???

Overall(General Specification)

Part number	ETML070023UDRA
Size	7 inch
Resolution	800RGB x 480
Outline Dimensions	188 x 127.04 x 8.46 mm
Active Area (A.A.)	152.4 x 91.44 mm

[Print](#)

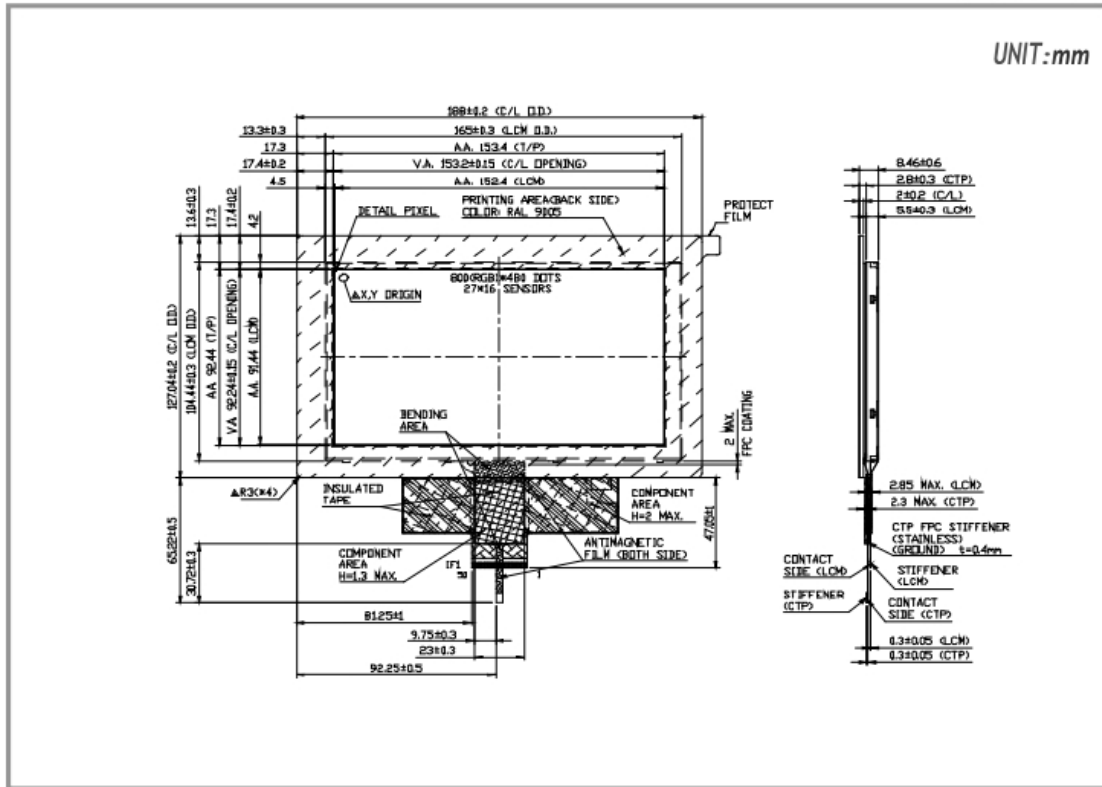
???

Panel Type	IPS-TFT LCD, Transmissive, Normally Black With Capacitive Touch
Viewing Angle(L/R/U/D)	Super Wide View, 80/80/80/80
Brightness	850 nits
LED lifetime(hrs)	50K
Interface	LCM: RGB 24 bit Parallel DE Mode Default, SYNC-Mode Enable Via SPI-Register Capacitive Touch: I2C
Power	
VCOM	Yes
LED Driver	Yes
Environment	
Operating Temperature	-30 to 85 °C
Storage Temperature	-30 to 85 °C

ETML070023UDRA | 800(RGB) x 480

DIMENSIONS

UNIT: mm



www.edtc.com

Not to scale
Emerging Display Technologies Corp.
Copyright 2007