



ETML215026DYA

特徵：

- 21.5吋1920*1080解析度IPS TFT顯示模組
- 1670萬色
- 亮度：850 尼特，電容式觸控螢幕
- 液晶顯示模組介面：LVDS
- 電容式觸控介面：USB 和 I2C
- 超寬視角：89/89/89/89（左/右/上/下）
- 電容式觸控螢幕可靈活訂製防水、手套支援等功能。
- 蓋板厚度、印刷、鍍膜等皆可客製化。

[Print](#)

Overall(General Specification)

| | |
|------------------------|---|
| Part number | ETML215026DYA |
| Size | 21.5 inch |
| Resolution | 1920RGB x 1080 |
| Outline Dimensions | 496.6(W) x 304.8(H) x 16.6(D) mm |
| Active Area (A.A.) | 476.64(W) x 268.11(H) mm |
| LCD Type | IPS-TFT LCD, Transmissive, Normally Black |
| Touch Screen | Capacitive Touch |
| Viewing Angle(L/R/U/D) | Super Wide View, 89/89/89/89 |
| Brightness | 850 nits |
| LED lifetime | 30K hrs |
| Interface | LCM: LVDS Capacitive Touch: USB & I2C |
| Power | |
| VCOM | Yes |
| LED Driver | Yes |

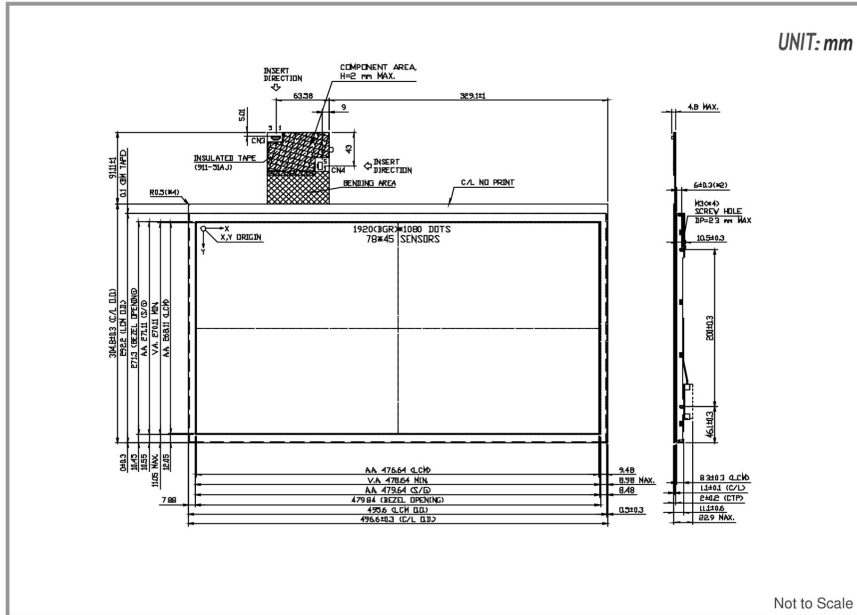
Environment

Operating Temperature -20 to 70°C

Storage Temperature -30 to 80 °C

ETML215026DYA | 1920(RGB) x 1080

DIMENSIONS



www.edtc.com

Emerging Display Technologies Corp.

Copyright 2007