

ETML043013DDHA

Features:

- 4.3-inch 480*272 resolution IPS TFT display module
- 16.7M colors
- Brightness: 420 nits with capacitive touch screen
- LCM Interface: RGB 24Bit Parallel (SYNC/DE/SYNC-DE Mode)
- Capacitive touch Interface: I2C
- Super Wide View: 85/85/85/85(L/R/U/D)
- The capacitive touch panel can be flexibly customized with features such as water rejection, glove support, etc.
- The cover lens can be customized with thickness, printing, coating and etc.

[Print](#)

???

Overall(General Specification)

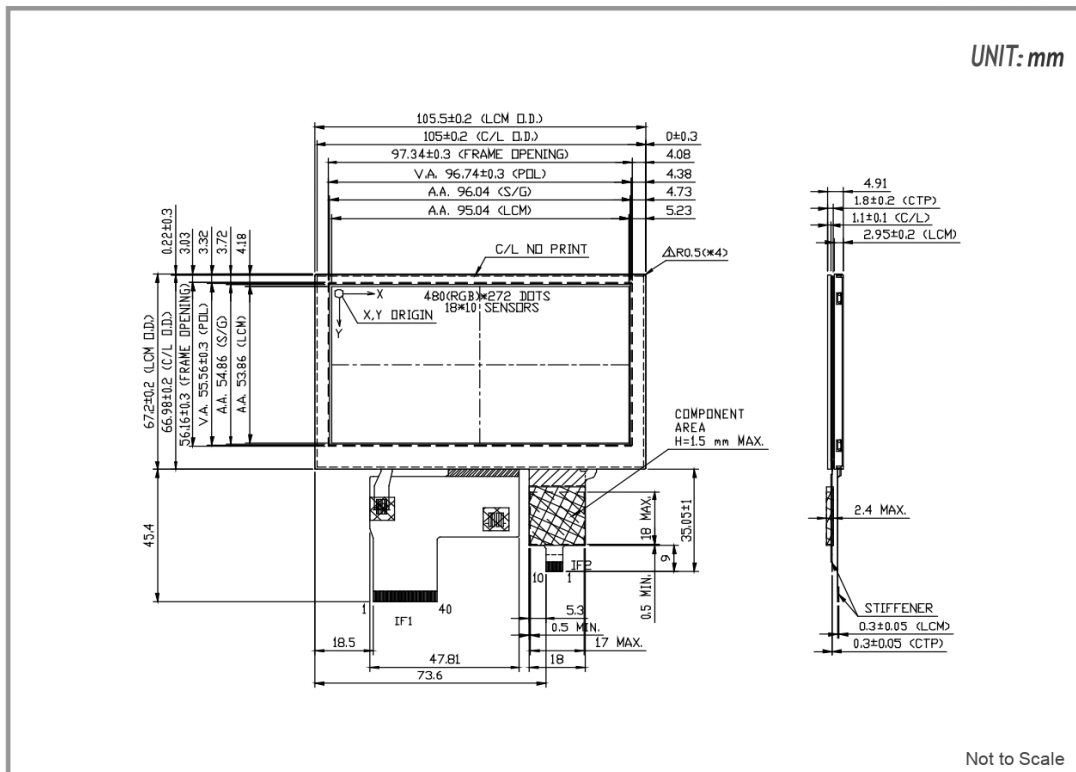
Part number	ETML043013DDHA
Size	4.3 inch
Resolution	480RGB * 272
Outline Dimensions(mm)	105.5 x 67.2 x 4.91
Active Area (A.A.) (mm)	95.04 x 53.86
Panel Type	IPS-TFT LCD, Transmissive, Normally Black, Anti-Glare With Capacitive Touch
Viewing Angle(L/R/U/D)	Super Wide View, 85/85/85/85
Brightness	420 nits
LED lifetime(hrs)	30K

???

Interface	LCM: RGB 24Bit Parallel (SYNC/DE/SYNC-DE Mode) Capacitive Touch: I2C
Power	
VCOM	Yes
LED Driver	No
Environment	
Operating Temperature	-20 to 70
Storage Temperature	-30 to 80

ETML043013DDHA | 480(RGB) x 272

DIMENSIONS



www.edtc.com

Emerging Display Technologies Corp.

Copyright 2007