

**ET070015DMA****Features:**

- 7-inch 800\*1280 resolution IPS TFT display module
  - 16.7M colors
  - Brightness: 530 nits
  - LCM Interface: MIPI
  - Super Wide View: 89/89/89/89(L/R/U/D)
- 

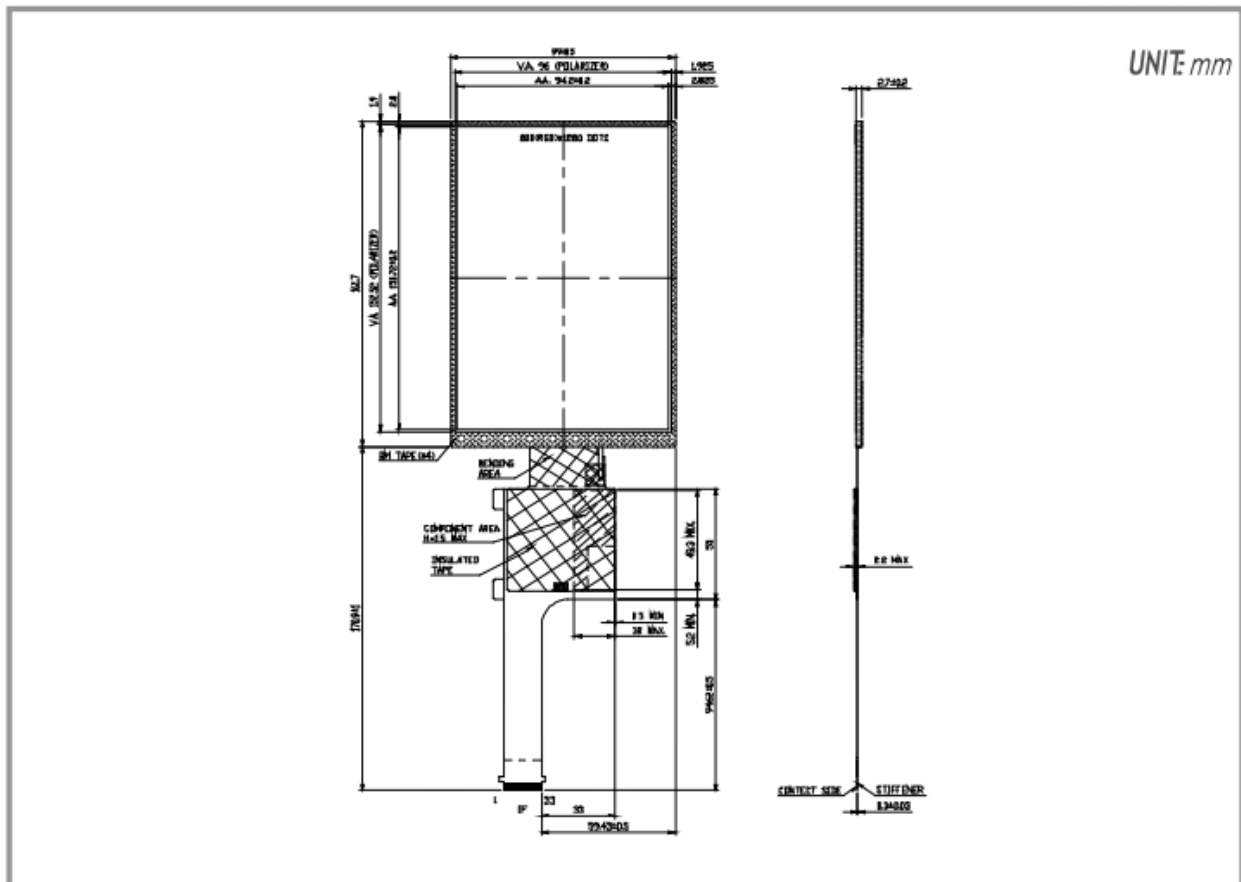
[Print](#)

**???****Overall(General Specification)**

Part number	ET070015DMA
Size	7 inch
Resolution	800RGB x 1280
Outline Dimensions	101.85 x 164 x 2.7 mm
Active Area (A.A.)	94.2 x 150.72 mm
Panel Type	IPS-TFT LCD, Transmissive, Normally Black
Viewing Angle(L/R/U/D)	Super Wide View, 89/89/89/89
Brightness	530 nits
LED lifetime	30K hrs
Interface	MIPI
Power	
VCOM	Yes
LED Driver	No
Environment	
Operating Temperature	-20 to 70 °C
Storage Temperature	-30 to 80 °C

ET070015DMA | 800(RGB) x 1280

## DIMENSIONS



www.edtc.com

Not to scale  
Emerging Display Technologies Corp.  
Copyright 2007