

**ET121013DBDBA****Features:**

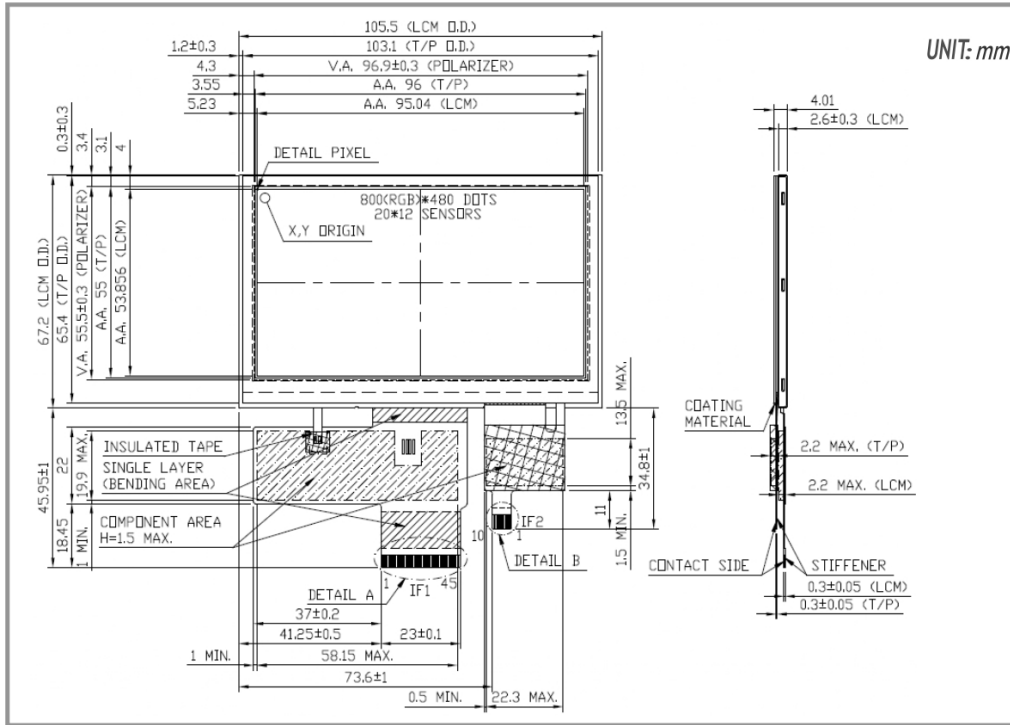
- 12.1-inch 1280*800 resolution IPS TFT display module
 - 16.7M colors
 - Brightness: 1000 nits
 - LCM Interface: LVDS 8 bit
 - Super Wide View: 85/85/85/85(L/R/U/D)
-

[Print](#)**Overall(General Specification)**

Part number	ET121013DBDBA
Size	12.1 inch
Resolution	1280RGB x 800
Outline Dimensions	277.7(W) x 180.6(H) x 6(D) mm
Active Area (A.A.)	261.12(W) x 163.2(H) mm
LCD Type	IPS-TFT LCD, Transmissive, Normally Black
Touch Screen	Not available
Viewing Angle(L/R/U/D)	Super Wide View, 85/85/85/85
Brightness	1000 nits
LED lifetime	30K hrs
Interface	LVDS 8 bit
Power	
VCOM	Yes
LED Driver	Yes
Environment	
Operating Temperature	-20 to 70 °C
Storage Temperature	-30 to 80 °C

ETM043011EDHA | 800(RGB) x 480

DIMENSIONS



www.edtc.com

Not to scale
Emerging Display Technologies Corp.
Copyright 2019