

ETM070018EDHA

Features:

- 7-inch 800*480 resolution IPS TFT display module
- 16.7M colors
- Brightness: 425 nits with capacitive touch screen
- LCM Interface: LVDS (8 bit)
- Capacitive touch Interface: I2C
- Super Wide View: 80/80/80/80(L/R/U/D)
- The capacitive touch panel can be flexibly customized with features such as water rejection, glove support, etc.

[Print](#)

???

Overall(General Specification)

Part number	ETM070018EDHA
Size	7 inch
Resolution	800RGB x 480
Outline Dimensions	165 x 104.44 x 11.6 mm
Active Area (A.A.)	152.4 x 91.44 mm
Panel Type	IPS-TFT LCD, Transmissive, Normally Black With Capacitive Touch
Viewing Angle(L/R/U/D)	Super Wide View: 80/80/80/80
Brightness	425 nits
LED lifetime(hrs)	50K
Interface	LCM: LVDS (8 bit) Capacitive Touch: I2C
Power	

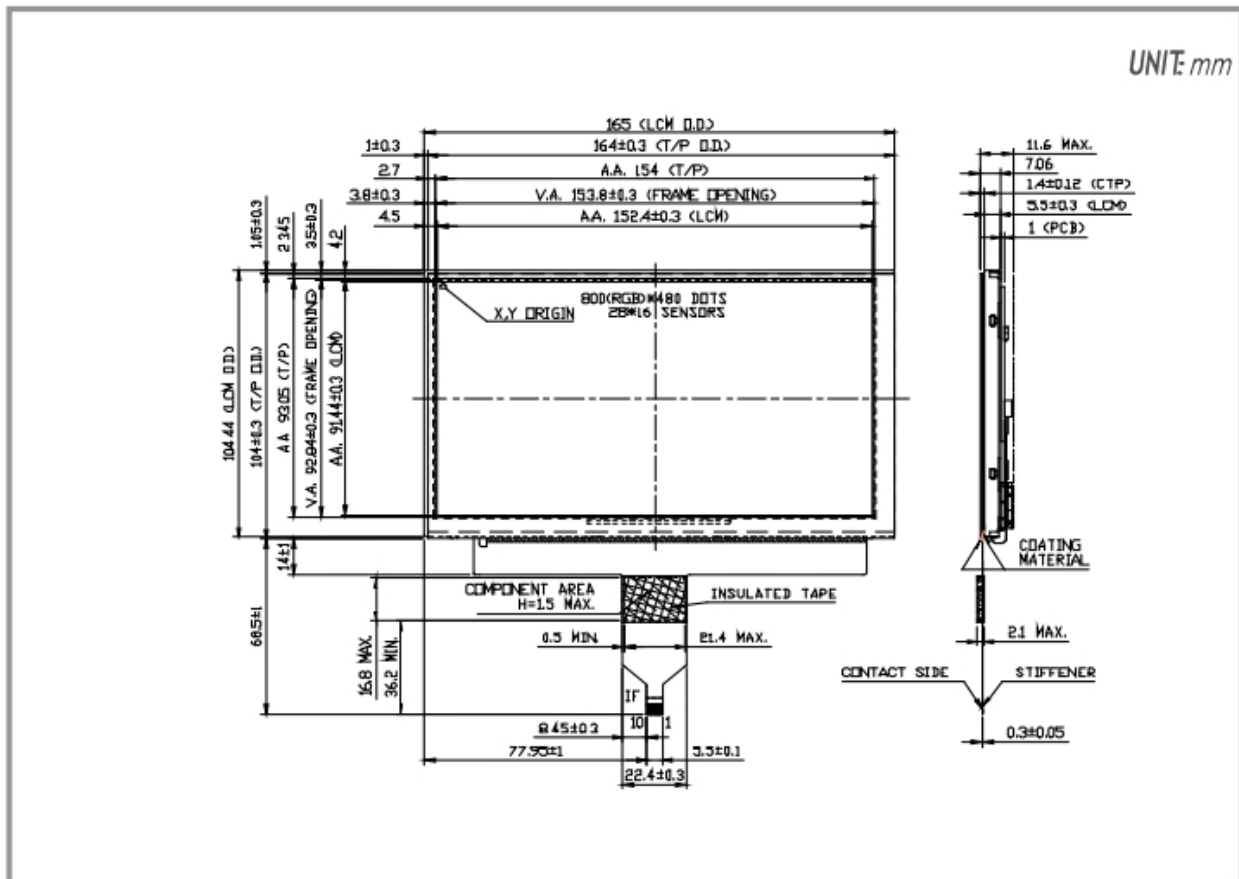
???

VCOM	Yes
LED Driver	Yes
Environment	
Operating Temperature	-30 to 85 °C
Storage Temperature	-30 to 85 °C

ETM070018EDHA | 800(RGB) x 480

DIMENSIONS

UNIT: mm



www.edtc.com

Not to scale
 Emerging Display Technologies Corp.
 Copyright 2007