



ETML104013DDHA

Features:

- 10.4-inch 1024*768 resolution IPS TFT display module
- 16.7M colors
- Brightness: 425 nits with capacitive touch screen
- LCM Interface: LVDS (6/8 bit)
- Capacitive touch Interface: USB
- Super Wide View: 85/85/85/85(L/R/U/D)
- The capacitive touch panel can be flexibly customized with features such as water rejection, glove support, etc.
- The cover lens can be customized with thickness, printing, coating and etc.

[Print](#)

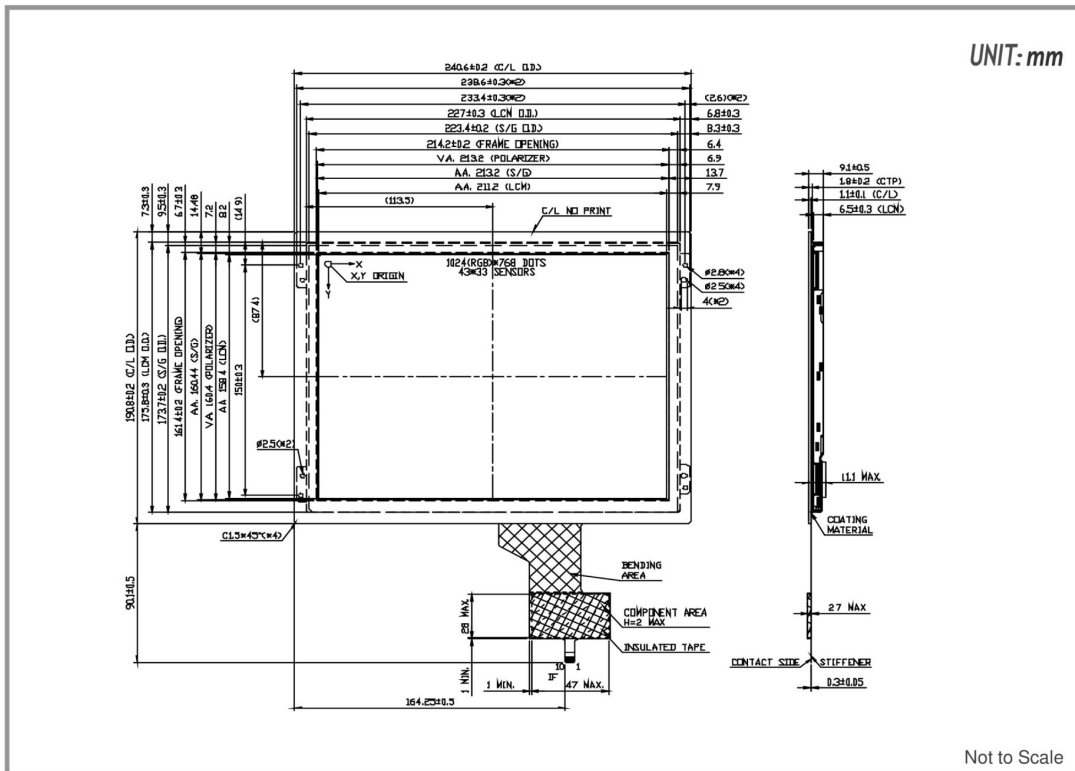
Overall(General Specification)

| | |
|------------------------|--|
| Part number | ETML104013DDHA |
| Size | 10.4 inch |
| Resolution | 1024RGB x 768 |
| Outline Dimensions | 240.6(W) x 190.8(H) x 9.1(D) mm |
| Active Area (A.A.) | 211.2(W) x 158.4(H) mm |
| LCD Type | IPS-TFT LCD, Transmissive, Normally Black |
| Touch Screen | Capacitive Touch |
| Viewing Angle(L/R/U/D) | Super Wide View, 85/85/85/85 |
| Brightness | 425 nits |
| LED lifetime | 30K hrs |
| Interface | LCM: LVDS (6/8 bit) Capacitive Touch: USB |

| | |
|-----------------------|--------------|
| Power | |
| VCOM | Yes |
| LED Driver | Yes |
| Environment | |
| Operating Temperature | -20 to 70 °C |
| Storage Temperature | -30 to 80 °C |

ETML104013DDHA | 1024RGB) x 768

DIMENSIONS



www.edtc.com

Emerging Display Technologies Corp.
Copyright 2007