

SMART EMBEDDED DISPLAY - 5.0-INCH IPS TFT LCD 800*480 WITH CAPACITIVE TOUCH - ETEMN050013ADHAL

Features:

- 16:10 5.0-inch 800*480 resolution IPS TFT display module
- 16.7M colors
- Brightness: 425 nits with capacitive touch screen
- Industrial Interface: USB, RS485, RS232, CAN, I2C, SPI, GPIO
- 7-36VDC Power supply range.
- Super Wide View: 80/80/80/80(L/R/U/D)
- The capacitive touch panel can be flexibly customized with features such as water rejection, glove support, etc.
- Arm M7 based MCU, external SDRAM and flash (up to 128 MB)

[Print](#)

Software

RTOS, GUI Development Software, and Initialization tool

FreeRTOS, TouchGFX, and CubeMX

Board Support Package

TouchGFX's tpa file support
Bootloader and flash-loader files

IDE

GCC, CubeIDE, IAR, and MDK-ARM

Overall

Size

5.0 inch

Outline Dimensions

118.5(W) x 77.55(H) x 11.8(D)(max) mm

Bonding Technology	Air Bonding
Display	
Color	16.7M
Panel Type	IPS-TFT LCD, Transmissive, Normally Black
Viewing Angle	Super Wide View, 80/80/80/80 (L/R/U/D)
Active Area (A.A.)	108(W) x 64.8(H) mm
Resolution	800RGB x 480
Brightness	425 nits
Viewing Area	110(W) x 66.8(H) mm
Active Area	108(W) x 64.8(H) mm
Dot Size	0.045(W) x 0.135(H) mm
Pixel Size	0.135(W) x 0.135(H) mm
Touch	
Type	Capacitive Touch Panel (CTP)
IC:	ILITEK ILI2511
Structure	0.7 mm soda lime cover glass
Power Consumption	
Voltage	7~36 V
Current	7 V: 400 mA 12 V: 235 mA 36 V: 85 mA
PoE Voltage	N/A
PoE Current	N/A
Embedded	
MCU	STM32F750
Internal SRAM	320KB
External SDRAM	16MB
Internal Flash	64KB
External Flash	32MB
Interface	
Power over Ethernet	N/A
USB	Full Speed
CAN	CAN 2.0
UART	RS232 and RS485
SPI	Support 3-wire and 4-wire
I2C	Yes
GPIO	6 pins
Programming	SWD interface (ST-link)

Environment

Operating Temperature

-20~70 °C

Storage Temperature

-30~80 °C

Vibration

Operating: 2.45 m/s² (0.25g)

Storage: 11.76 m/s² (1.2g)

Shock

Operating: 29.4 m/s² (3g)

Storage: 490 m/s² (50g)

Certification

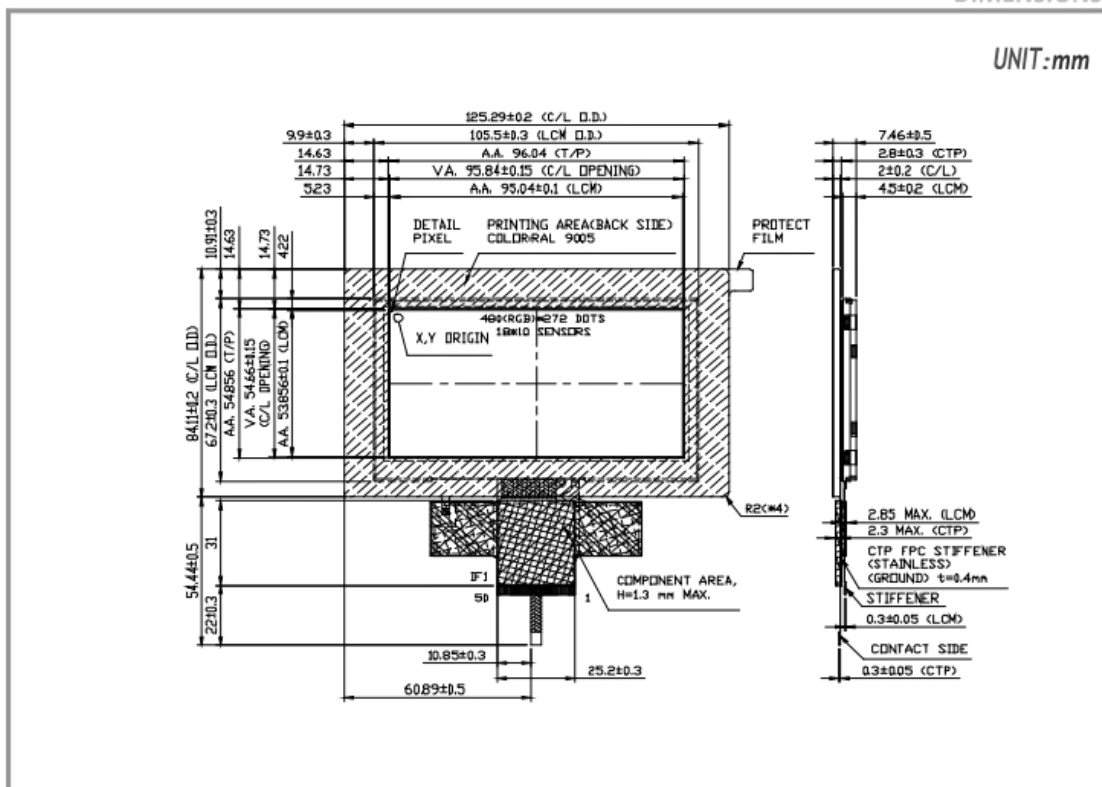
CE Certification

YES.

ETML043023UDRA | 480(RGB) x 272

DIMENSIONS

UNIT:mm



Browser not compatible.