

SMART EMBEDDED DISPLAY - 7.0-INCH IPS TFT LCD 1024*600 WITH CAPACITIVE TOUCH - ETEMN070016MDRAM

Features:

- 16:9 7.0-inch 1024*600 resolution IPS TFT display module
- 16.7M colors
- Brightness: 850 nits with capacitive touch screen
- Industrial Interface: Ethernet (10/100 Base), USB, RS485, RS232, CAN FD, I2C, SPI, GPIO
- 7-36VDC Power supply range and PoE support.
- Super Wide View: 85/85/85/85(L/R/U/D)
- The capacitive touch panel can be flexibly customized with features such as water rejection, glove support, etc.
- Arm M7 based MCU, external SDRAM and flash (up to 128 MB)

[Print](#)

Software

RTOS, GUI Development Software, and Initialization tool

FreeRTOS, TouchGFX, and CubeMX

Board Support Package

TouchGFX's tpa file support
Bootloader and flash-loader files

IDE

GCC, CubeIDE, IAR, and MDK-ARM

Overall

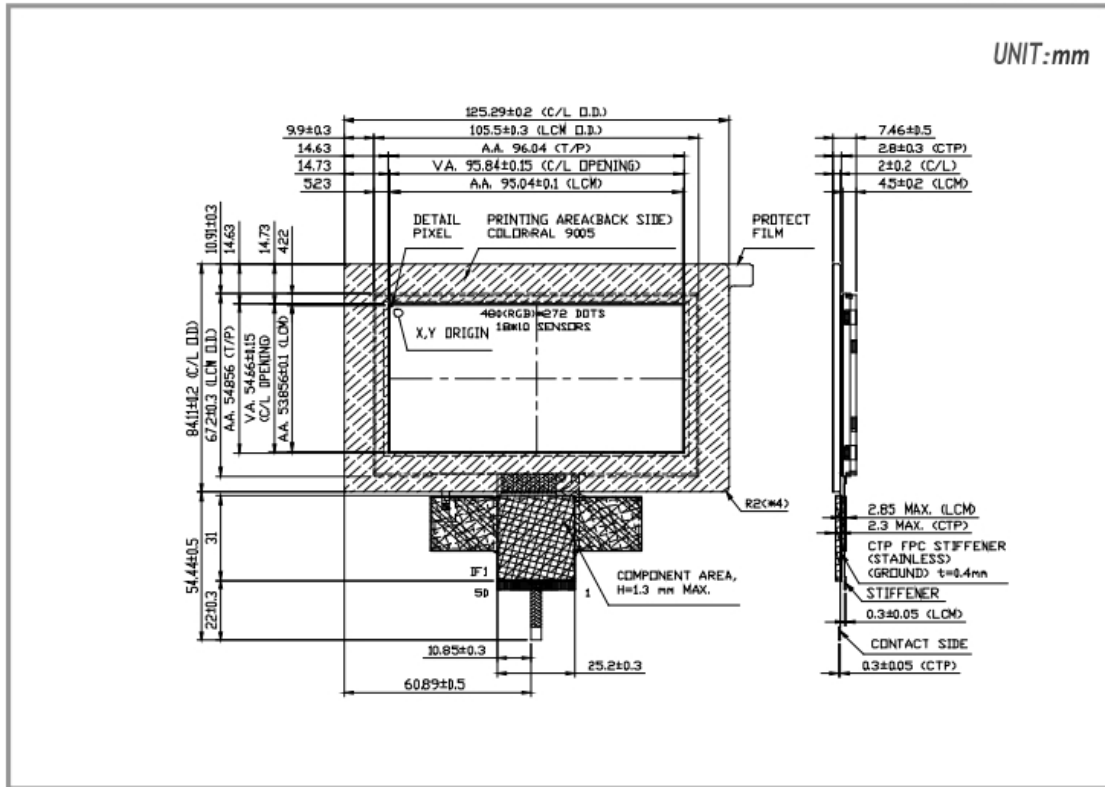
Size	7.0 inch
Outline Dimensions	166.2(W) x 100.3(H) x 12.4(D)(max) mm
Bonding Technology	Air Bonding
Display	
Color	16.7M
Panel Type	IPS-TFT LCD, Transmissive, Normally Black
Viewing Angle	Super Wide View, 85/85/85/85 (L/R/U/D)
Active Area (A.A.)	154.21(W) x 85.92(H) mm
Resolution	1024RGB x 600
Brightness	850 nits
Viewing Area	155.6(W) x 87.9(H) mm
Active Area	154.21(W) x 85.92(H) mm
Dot Size	0.0502(W) x 0.1432(H) mm
Pixel Size	0.1506(W) x 0.1432(H) mm
Touch	
Type	Capacitive Touch Panel (CTP)
IC:	ILITEK ILI2511
Structure	0.7 mm chemically strengthened cover glass
Power Consumption	
Voltage	7~36 V
Current	7 V: 1335 mA 12 V: 765 mA 36 V: 270 mA
PoE Voltage	48 V
PoE Current	205 mA
Embedded	
MCU	STM32H750
Internal SRAM	1MB
External SDRAM	16MB
Internal Flash	128KB
External Flash	64MB
Interface	
Power over Ethernet	Ethernet : 10/100 Base IEEE 802.3 at type 2 PD support
USB	Full Speed
CAN	CAN 2.0 and CANFD
UART	RS232 and RS485
SPI	Support 3-wire and 4-wire

I2C	Yes
GPIO	6 pins
Programming	SWD interface (ST-link)
Environment	
Operating Temperature	-20~70 °C
Storage Temperature	-30~80 °C
Vibration	Operating: 2.45 m/s ² (0.25g) Storage: 11.76 m/s ² (1.2g)
Shock	Operating: 29.4 m/s ² (3g) Storage: 490 m/s ² (50g)
Certification	
CE Certification	N/A

ETML043023UDRA | 480(RGB) x 272

DIMENSIONS

UNIT: mm



www.edtc.com

Not to scale
 Emerging Display Technologies Corp.
 Copyright 2007

Browser not compatible.